



14th Hong Kong Half Marathon Dragon Boat Championships

Race Bulletin (1)

Date of publication: 15 Sep 2025

Date : 9 November 2025 (Sunday)

Time : 1000 – 1500 hours

Venue : HKCDBA Shek Mun Training Centre, Section 51E On King Street, Shek Mun, Shatin, New Territories

Categories	Standard Boat		Entry Fee (HK\$)
	Distance	Quota (Team)	
Open	Half Marathon	7	2025-26 Club member \$900 per team Non-club member \$1,300 per team
Mixed		7	
Open	10 KM	7	
Mixed		7	

Category	Entry requirement
Basic rules	<ul style="list-style-type: none"> ▪ Able to swim at least 50 meters in light clothing; ▪ Aged 12 or above as of 9 November 2025; ▪ All athletes shall be a valid Individual Member of the HKCDBA.
Open	<ul style="list-style-type: none"> ▪ No gender limitation
Mixed	<ul style="list-style-type: none"> ▪ At least 8 and not more than 9 paddlers of either gender, no gender limitation for helm and drummer

<p>First phase of online registration From 15 Sep to 20 Oct</p>	<p>Online Registration Page: https://forms.gle/U4h5MQQD7PpL6BmE9</p> <p>Team managers must:</p> <ol style="list-style-type: none"> 1. Register the race category(ies) for his/ her own team; 2. Pay all fees by separate cheque(s); <p>All quota(s) will be assigned on first-come-first-served basis. Late Submission will not be accepted.</p> <p>(Note: Successful entries will rest with the total number of participating teams.)</p> <p>Team should submit the cheque to complete the first phase registration.</p>
<p>Team Managers' Meeting before race</p>	<p>The Team Managers' Meeting before the race will be held in the lecture room of the HKCDBA Shek Mun Training Centre on race day.</p> <p>The crew list will be distributed during the team manager meeting on the race day. All team managers must attend and submit the completed list afterward.</p> <p>Half Marathon - 0830 hrs.</p> <p>10 KM - 0915 hrs.</p>
<p>Awards</p>	<p>: All participants who finish the Half-Marathon will be given a commemorative t-shirt and medal.</p> <p>Standard Boat - Champion, 1st runner-up and 2nd runner-up of each category will be awarded a Trophy and 32 Medals.</p>
<p>Equipment</p>	<p>: All equipment will be provided by HKCDBA;</p> <p>Athletes can use their own paddles for the race, the requirement of the paddles must comply with 5.2 Amendments for HKCDBA Competition Regulations and Rules of Racing;</p> <p>Athletes can use their own Personal Flootation Device (PFD) for racing, except the Inflatable PFD.</p>
<p>Competitions Regulations and Rules of Racing</p>	<p>: It will be run in accordance to Race By-Law, the latest version of IDBF Competitions Regulations and Rules of Racing and the latest version of Amendments for HKCDBA Competitions Regulations and Rules of Racing.</p>

Crew marquee arrangement : Each team may apply to rent a marquee by 20 October. The rental fee for each marquee is HK\$500, which includes installation, dismantling, and a bag of ice provided by HKCDBA. Please email the transaction record to the Secretariat for confirmation.

For applications submitted after the deadline, the rental fee remains HK\$500, but teams will be responsible for their own installation and dismantling. Additionally, a refundable deposit of HK\$600 will be required.

Due to the limited number of marquees, they will be allocated on a first-come, first-served basis. The actual number of marquees may vary based on the setup conditions, and specific locations will be announced later. Please note that once a marquee is reserved and payment is made, the rental fee will not be refunded if you wish to cancel the reservation.

Ice Order Information : Teams may place an order for ice before 20 October. Each bag costs HK\$30. Please bring your own containers to store the ice. Please email the transaction record to the Secretariat for confirmation. After the deadline, ice ordering will no longer be available.

If the weather forecast indicates a maximum temperature of 35 degrees Celsius or higher at 0700 hours of the event day, HKCDBA will distribute a limited amount of ice on a first-come, first-served basis, until supplies last. Please stay tuned for announcements in the Team Managers' WhatsApp group.

Marquee and Ice Payment Details:

Please transfer the fees to the following account:

HSBC Account:

600-650568-002 Hong Kong China Dragon Boat Association

Safeguarding National Security : Participants are prohibited from committing or attempting to commit any act in violation of the laws of the HKSAR and the National Security Law governing the HKSAR. Participants' act must not be contrary to the interest of national security.

HKCDBA has the right to prohibit any participant who performs any act or displays any form of message that arouses public concern or is otherwise deemed inappropriate by HKCDBA to participate in the event from joining / continuing the event.

- Marine Safety (Alcohol and Drugs) Ordinance (Cap. 649) :
- All participants should observe the following laws against drink and drug boating in Hong Kong waters:
1. A person must not operate a vessel that is underway while the person is under the influence of alcohol to such an extent as to be incapable of having proper control of the vessel.
 2. A person must not perform any designated duty on board a vessel that is underway while the person is under the influence of alcohol to such an extent as to be incapable of performing the designated duty properly on board the vessel.
 3. A person who contravenes subsection (1) or (2) commits an offence and is liable—
 - a) on summary conviction—
 - i. if the person has never previously been convicted of any Part 2 offence, whether on summary conviction or on conviction on indictment—to a fine at level 3 and to imprisonment for 6 months; or
 - ii. in any other case—to a fine at level 4 and to imprisonment for 12 months; or
 - b) on conviction on indictment—to a fine at level 4 and to imprisonment for 3 years.
 4. If a court or magistrate convicts a person of an offence in accordance with subsection (3), the court or magistrate must order that the person be disqualified—
 - a) If the person has never previously been convicted of any Part 2 offence— for a period of not less than 2 years; or
 - b) In any other case— for a period of not less than 5 years.
- Arrangement under Inclement Weather :
- If typhoon signal No. 3 or above, red or black rainstorm warning signal is in force at 0700 hours. on the race day, all the races will be cancelled. Entry fee would not be refunded.
 - If thunderstorm warning, typhoon signal No. 1, amber rainstorm warning signal is in force on the race day, all teams shall report on time. Cancellation or delay of races is subject to the final decision of organizing committee. All teams should obey the arrangement announced by organizing committee.
 - In case weather condition is getting worse during the races, the organizer reserves the right to cancel or postpone the race. Entry fee would not be refunded.

Enquiry : Hong Kong China Dragon Boat Association Secretariat
Address : Unit 9, 15/F, Laurels Industrial Centre, 32 Tai Yau Street, San Po
Kong, Kowloon.
Tel : (852) 3110 0079
Email : championships@hkcdba.org

Race By-Law

1. The crew list will be distributed during the Team Managers' Meeting before race on the race day. All team managers must attend and submit the completed crew list afterward.
2. Maximum number of athletes in each team should be 33 (i.e., 1 drummer, 1 helm, 18 - 31 paddlers. (At least 18 and not more than 20 paddlers, 1 drummer & 1 helm in each standard boat).
3. With the concern of safety, HKCDBA reserves the right to decide the number of athletes on boat on the race day.
4. Team Manager: each team must have a Team Manager or the appointed Team Manager who is required to standby in the Crew Assembly Area, i.e., easily be seen and called by Race Officials, during the time when the team is racing.
5. Coach: Team Manager can assign the team coach to race during the second phase of online registration, he/ she must observe the entry requirements of respective races. For coaches who would race in any championships, they must register as athletes.
6. Substitution of drummer or helm: anyone on the registered crew list is allowed to act as the backup of the drummer or helm.
7. All athletes are not allowed to represent more than 1 team in each category. That is, sub-teams under the same team's name Team A and Team B are regarded as 2 teams in the same category.
8. All teams are required to report to the crew assembly area and be ready to embark 30 minutes before the Race or 4 races prior to the scheduled start time (shorter access time prevail).
9. Teams will be disqualified if they are found not meeting the entry requirements.
10. There is no limitation on the number of entries for each organization.
11. Categories with less than 3 entries may be cancelled.
12. HKCDBA organizing committee reserves the right to refuse any entry into the races at its sole discretion without given any reasons.
13. Any team or athlete who don't demonstrate a good sportsmanship may be disqualified.
14. Any team, including Team Manager, Athletes and Crew Members, who severely contravenes rules and regulations or disciplinary code will be disqualified, and are not entitled for any awards, even suspension from participating in any events hosted/co-hosted/co-organized by the HKCDBA.
15. Any action violates the law of Hong Kong government by the team or athlete may result in disqualification and no refund will be allowed.
16. In case of any dispute, the decision of HKCDBA should be final and reserves the right to revise the race regulations at its sole discretion.
17. If there is any inconsistency between the English version and Chinese version, the Chinese version shall prevail.

Race Course Route

10 公里比賽航道 10 Kilometers Race Track

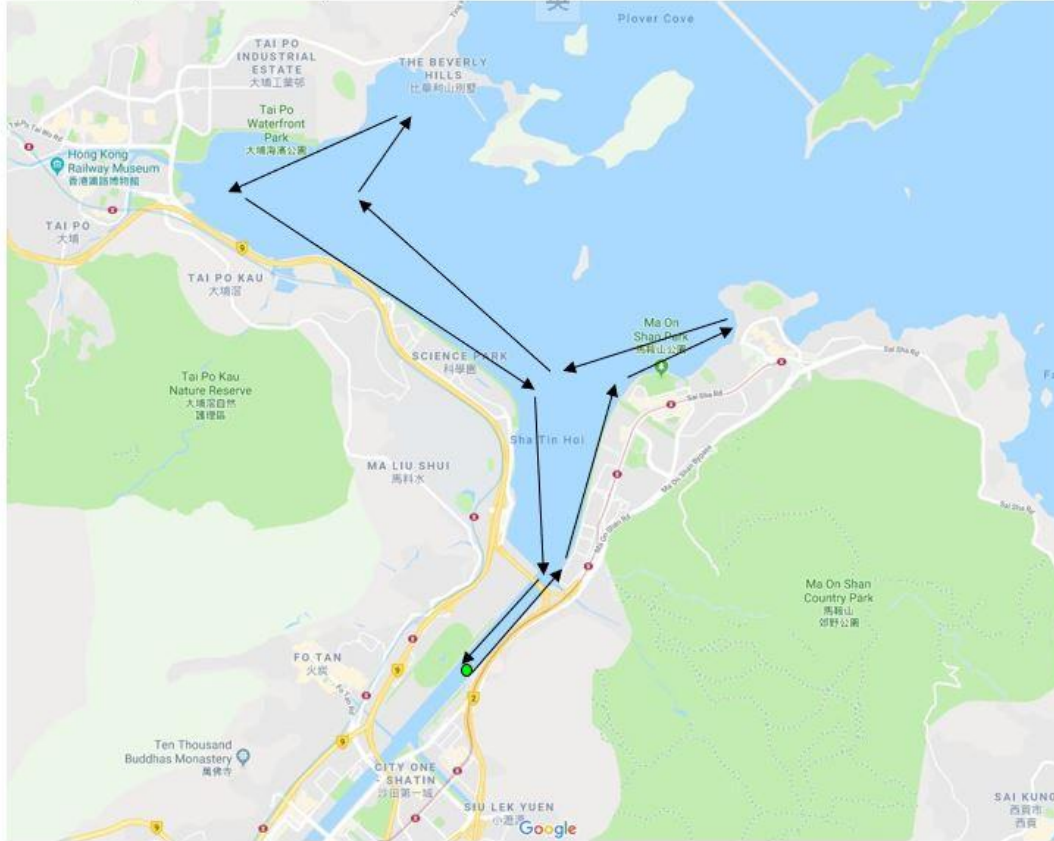


10KM ~ Start from HKCDBA Shek Mun Training Centre, go straight out of Tai Shui Hang, go straight along Ma On Shan Promenade, pass Wu Kai Sha Public Pier, then go to the end of Wu Kai Sha To Tau Wan Village (Whitehead), then take the same path and return to Shek Mun Training Centre.

半馬拉松比賽航道 Half Marathon Race Track

● 起步 / 終點浮標
Start / Finish Buoy

↔ 比賽航道
Race Track



Half Marathon~ Start from HKCDBA Shek Mun Training Centre, go straight out of Tai Shui Hang, go straight along Ma On Shan Promenade, pass Wu Kai Sha Public Pier, then go to the end of Wu Kai Sha To Tau Wan Village (Whitehead), turn to the southern end of Science Park, and follow the Pak Shek Kok Promenade until The end of the Tai Po Waterfront Park Cycle Track is facing the sea, towards Fortune Garden, then turn around to the Tai Po Waterfront Park Cycle Track, along the Waterfront Park Cycle Track until the Pak Shek Kok Promenade, along the waterfront of the Science Park, via Ma Liu Shui Pier and Marine Police Station Return to Shek Mun Training Center.